

**WAFER TYPE**

**DISC CHECK VALVE**



- **D6666I** (stainless steel)  
Metal seated

**SWING CHECK VALVE**



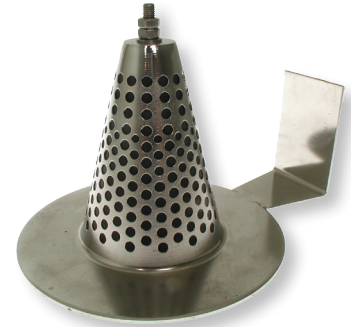
- **1451EC** (stainless steel)  
Seat in Viton
- **R-series**  
(steel/stainless steel)  
Options:  
spring, counterweight,  
hydraulic dampener

**DUO CHECK VALVE**



- **100** (cast iron)
- **133** (nodular cast iron)
- **200** (steel)
- **300** (stainless steel)

**DIAPHRAGM CHECK VALVE**

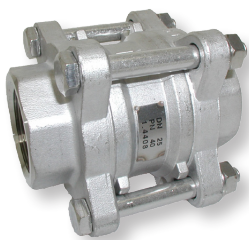


- **CD** (stainless steel)
- Diaphragm:
- EPDM
  - Silicone
  - Viton
  - Buna

Seat alternatives: EPDM / Viton / PTFE

**THREADED/WELDED**

**DISC CHECK VALVE**



- **D6666T**  
(stainless steel)  
Connections:  
- BSP  
- BW  
- SW  
- NPT
- **D6666TSTR**  
(foot valve)

**SWING CHECK**



- **77104**  
(brass)
- **1244**  
(stainless steel)
- Also available:  
- SW  
- NPT

**PISTON CHECK VALVE**



- **1243**  
(stainless steel)  
- BSP
- **VR800**  
(steel/  
stainless steel)  
- SW  
- NPT

**WITH BALL/GUIDED**



- **290**  
(brass)
- **290X**  
(stainless steel)
- **2002**  
(bronze)

**DIAPHRAGM CHECK**



- **CDS**  
(bronze/stainless  
steel)
- Diaphragm:
- EPDM
  - Silicone
  - Viton
  - Buna

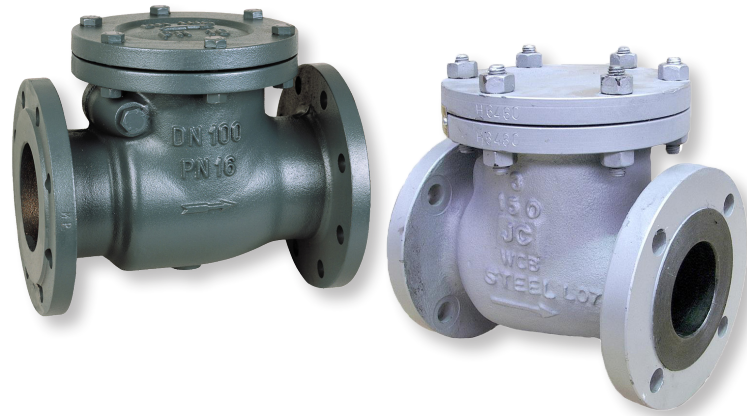
(FLANGED)

**FOOT VALVE**



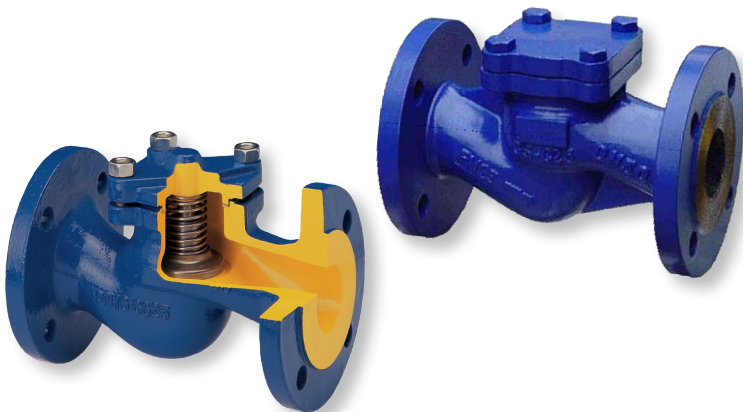
- **3740** (cast iron)

**SWING CHECK VALVE**



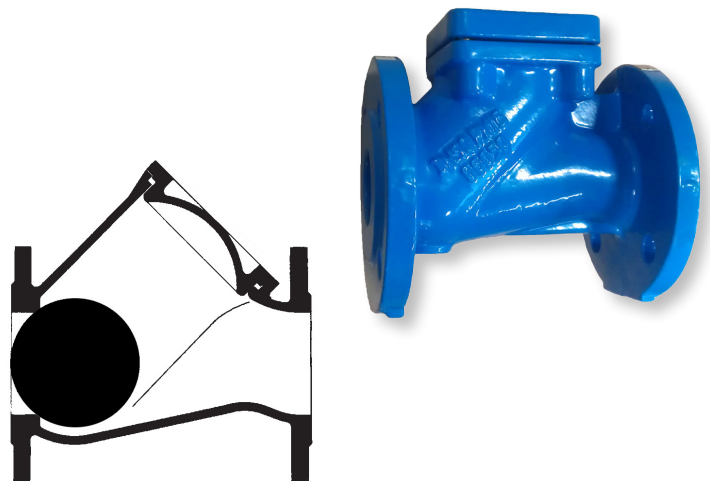
- **3800** (cast iron) (DIN)
- **505C** (carbon steel) (DIN)
- **VR-series** (carbon steel and stainless steel) VR150, VR300, VR600, VR800, ... (ANSI)

**PISTON CHECK VALVE**



- **6116X** (cast iron)
- **6240XT** (steel)

**BALL CHECK VALVE**



- **5087XT** (cast iron)
- **5087RVS** (stainless steel)