



Upgrade

General features (standard execution)

Material choice	Shaft in steel ENP
Temperature range	-20°C to +80°C
Working pressure	3-8 bar
Output torque	15 Nm to 3112 Nm (higher output torques available on request)
Rotation	90° (-5° +/-15° close, +5° - 15° open)
Mounting (limit switches)	According to VDI/VDE 3845
Mounting flange	According to ISO 5211 □ According to DIN 3337 ◇
Executions	Double acting and spring-return Normally open and normally closed





Special executions

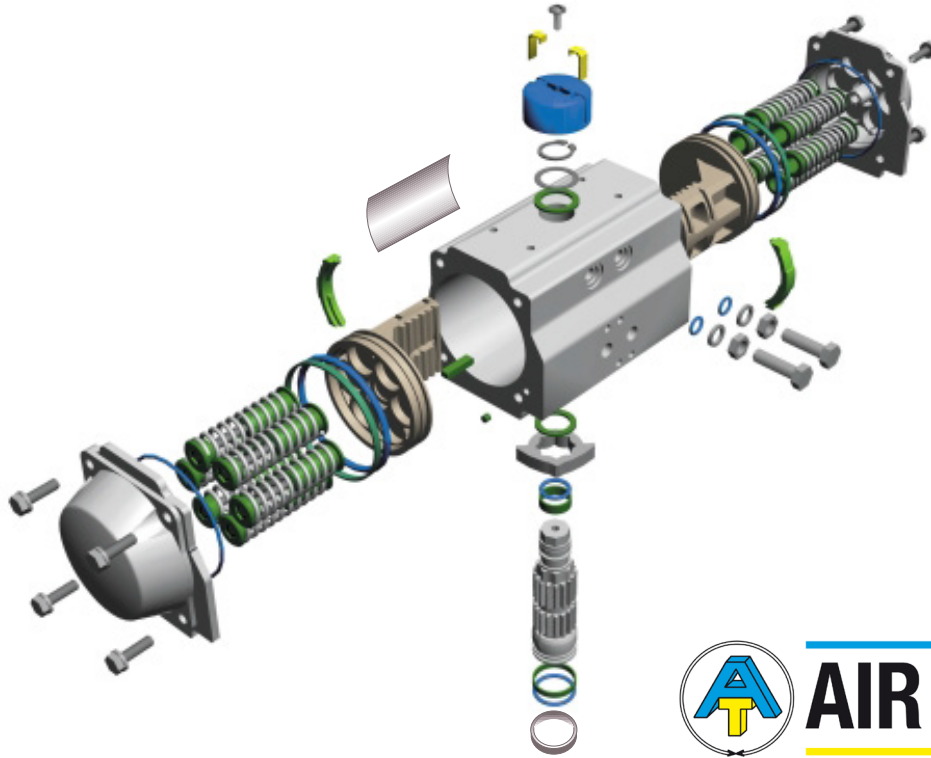
	120°-135°-180° actuator, 3-position actuator, temperature range from -55 °C to +150 °C, fire proof actuator, special seals, special coatings
--	--

Materials

Body	Aluminium Finish: inside and outside hard anodised coating
Shaft	Steel, ENP
Covers	Aluminium, anodised and coated
Pistons	Aluminium, anodised

Certificates

  <small>PED 97/23/EC</small>  	ISO 9001 : 2008
	PED 2014/68/EU
	ATEX 2014/34/EU
	ATEX TÜV Rheinland
	SIL 3 according to IEC EN61508
	GOST-R certificate

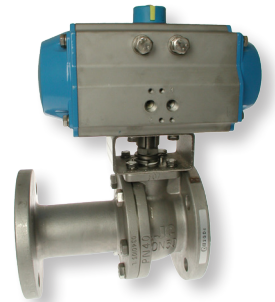
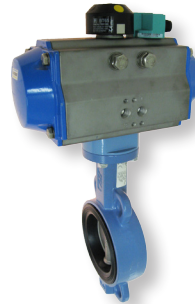
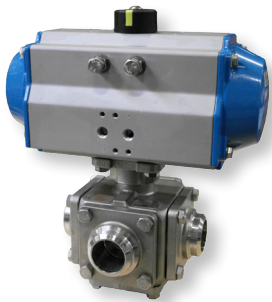


3-WAY

INSERTS

BUTTERFLY VALVE

LONG PATTERN

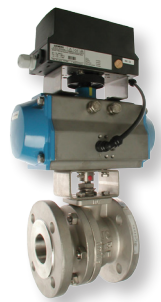
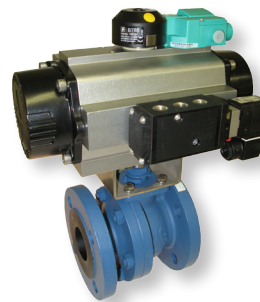
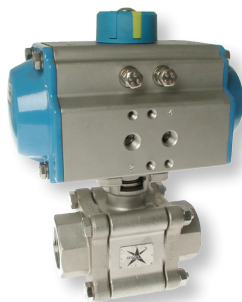
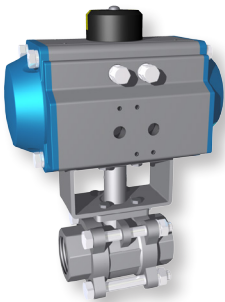


COUPLING & BRACKET

DIRECT MOUNTING

OPEN-CLOSED

WITH POSITIONER



SPEED CONTROL PLATE

BREATHER BLOCK

BLOCK & VENT SOLENOID

MANUAL OVERRIDE

